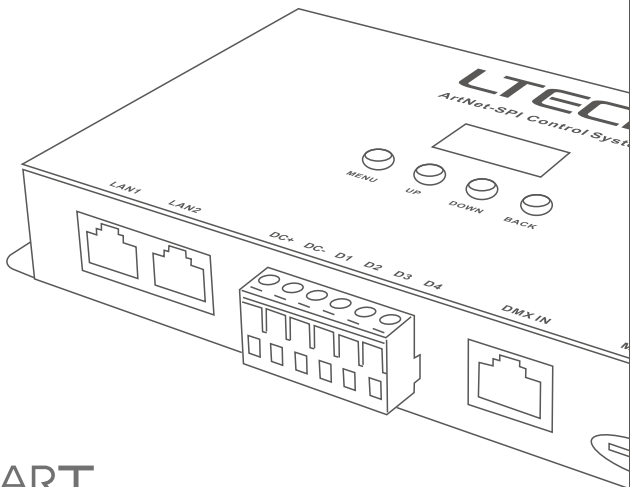


LTECH

ArtNet-SPI Control System

Model: Artnet-SPI-4
Artnet-SPI-8



**ART
NET**
ETHERNET

Manual

Product Introduction

- Ethernet Control System based on the ArtNet protocol.
- Convert the ArtNet network data package into SPI data.
- Adopting high-speed ARM processor, stable and reliable.
- With RJ45 network and DMX512 interface, support DMX management.
- With OLED screen and 4 keys, very easy for setting operation.
- Support firmware update function.
- Support recording function, support multiple device offline sync playback function.
- Support offline timing and loop playback.
- Supports serial/parallel connection of network cables.
- Supports static/dynamic IP settings.
- Compatible with the light software based on ArtNet protocol.
- Used in LED dot matrix and DMX512 stage lighting control.
- Offline synchronized playback does not need to specify the master and slave.
- Suitable for TV station recorded scene, stage performances, entertainment, building lighting and so on.



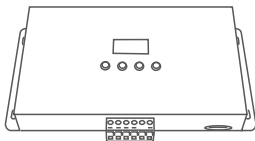
Technical Specs

Artnet-SPI-4 / Artnet-SPI-8

Input voltage :	5~24Vdc	Screen:	OLED
Input signal:	Ethernet (ArtNet)	Isolation ethernet port:	Total isolation
Output signal:	SPI	Isolation power input:	Total isolation
SD card capability:	8G	Working temperature:	-30°C~55°C
DMX connection:	RJ45	Dimension:	L170×W90×H25mm
Network connection:	RJ45	Package size:	L192×W132×H50mm
Control:	Artnet-SPI-4: 680 pixels, 4 universe Artnet-SPI-8: 1360 pixels, 8 universe	Weight (G.W):	610g

兼容IC: TM1809/TM1804/TM1812/UCS1903/UCS1909/UCS1912/UCS2903/UCS2912
WS2811/WS2812/SK6812/TM1803/TLS3001/KL590/KL592D/WS2821/TM1829LS
MBI6120/GW6205/GS8206(BGR)/SM16703/UCS2904/UCS8904B/SK6812(RGBW)

Package Contents



Control system 1pcs



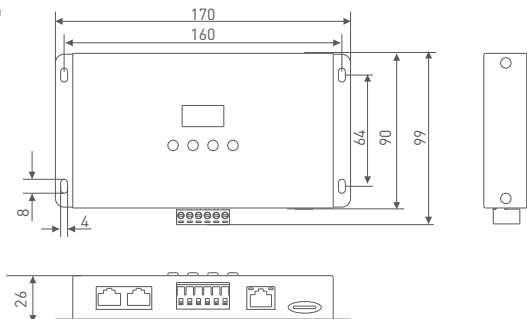
SD card (8G) 1pcs



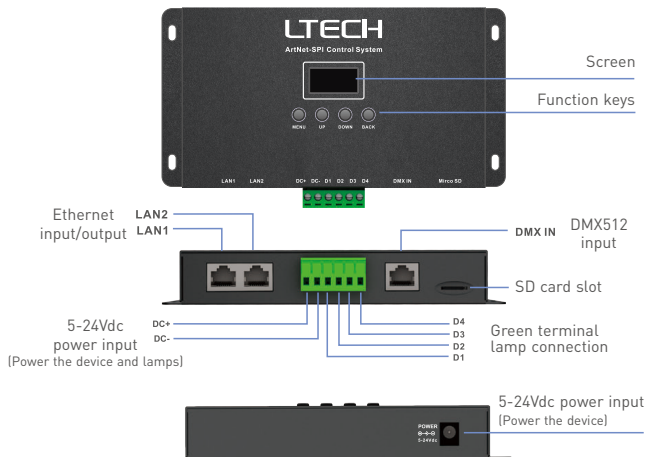
Manual 1pcs

Product Size

Unit: mm

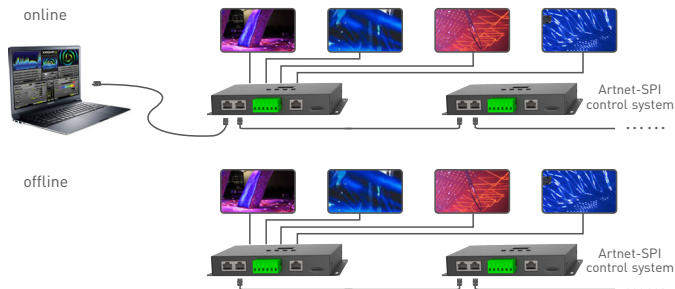


Main Component Description



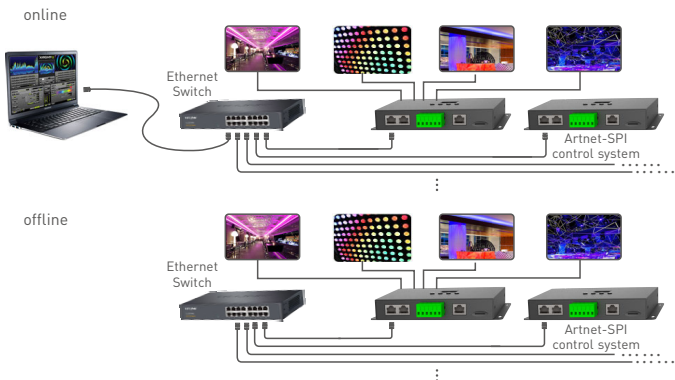
Wiring Diagram

1. Connection in series



* Offline synchronized playback no need to specify the master and slave.

2. Connection in parallel




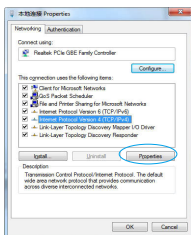
* Offline synchronized playback no need to specify the master and slave.

* Parallel connection is recommended for large number of devices.

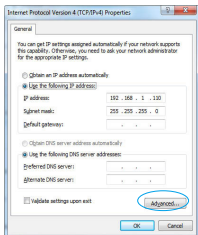
Connect ArtNet control system to computer

This product is compatible with all the ArtNet software in the market, here take MADRIX as an example:

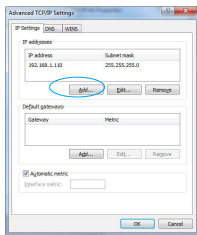
1. Install the Madrix 3 software in the computer, the icon on the desktop :  MADRIX 3
2. Use the equipped adapter to power ArtNet control system
3. Connect ArtNet control system to computer via the cable.
4. IP Setting: This control system is compatible with random network segment. According to the ArtNet protocol, 2.X.X.X or 10.X.X.X can be added in the computer (X means arbitrary value), methods as below:



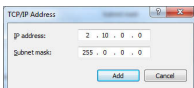
- 4.1 Open the Network, click "Properties" button of the TCP/IPv4 protocol.



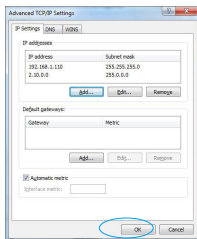
- 4.2 Click "Advanced".



- 4.3 Click "Add".



- 4.4 Add the IP address 2.X.X.X or 10.X.X.X (X could be arbitrary value).



- 4.5 Interface of adding successful, click "OK" and exit.

5. Open Madrix 3 software, choose "preferences" > "device manager" from menu.



6. In "device manager" dialog, choose "ArtNet" tab, tick "enable" and click search. Artnet-SPI-4 / Artnet-SPI-8 will be searched.



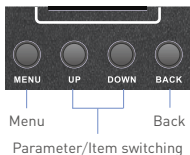
7. Click the tab of "DMX devices", set port status to "ON" if connected successfully. Now, you can use computer to control lamps via ArtNet-SPI-4 / ArtNet-SPI-8.



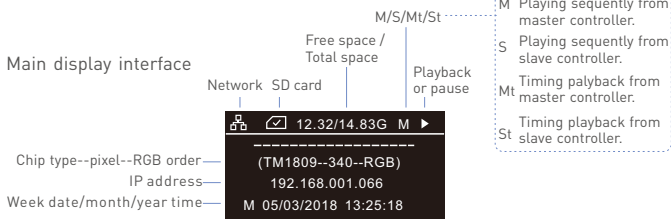
* MADRIX® is registered trademarks of Inoage GmbH Co., Inc. in Germany.

LCD Screen Interface Diagram

Key function

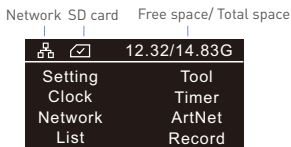


Main display interface



Press "MENU" key to enter main menu.
Press "BACK" to playback/pause.

Main menu



Press "UP" key or "DOWN" key" to switch item.
Press MENU" key to enter submenu.

Clock

Clock		
Year	Mon	Day
2018	03	05
Hour	Min	Sec
14	09	33

Press "MENU" key to switch item.
Press "UP" key or "DOWN" key to adjust parameter.

Setting

Setting	
Chip type	Chip: TM1809
RGB order	Order: GRB
Brightness of load lamp	Bright: 254
Address of the DMX	DMX: 001

Press "MENU" key to switch item.

Press "UP" key or "DOWN" key to adjust parameter.

Tool

Tool	
Screensaver	Screen: Never
Screen contrast	Contrast: 60%
Screen lock	Lock: OFF

Press "MENU" key to switch item.

Press "UP" key or "DOWN" key to adjust parameter.

Timer

Timer	
01. 2019/06/11~	<input type="checkbox"/>
02. Unknown~	<input type="checkbox"/>
03. Unknown~	<input type="checkbox"/>
04. Unknown~	<input type="checkbox"/>
05. Unknown~	<input type="checkbox"/>

Press "MENU" key to switch item, Press "DOWN" key to enter submenu.

Press "UP" key start or stop the timer, tick ✓ in the box means start.

[only effective for timer which has been set].

Data submenu

Dateweek	
Sta:2018/03/05 14:43	
End:2018/03/05 14:43	↓
01.201707151556	<input type="checkbox"/>
02.201707151656	<input type="checkbox"/>
03.201712201556	<input type="checkbox"/>

File name

Week submenu

Dateweek						
Mo	Tu	We	Th	Fr	Sa	Su
<input type="checkbox"/>	<input type="checkbox"/>	<input type="checkbox"/>	<input type="checkbox"/>	<input type="checkbox"/>	<input type="checkbox"/>	<input type="checkbox"/>
01.201707151556						↓
02.201707151656						<input type="checkbox"/>
03.201712201556						<input type="checkbox"/>

File name

Press "MENU" key to switch item.

Press "UP" key or "DOWN" key to select file, tick ✓ in the box means select it.

Network

DHCP ON: dynamic IP
DHCP OFF:static IP

Network	
DHCP:	ON
IP:	192.168.001.066
MK:	255.255.255.000
GW:	192.168.001.001

Press "MENU" key to switch item.

Press "UP" key or "DOWN" key to adjust parameter.

* Dynamic IP's parameters are automatically updated and cannot be changed manually.

List


File name —

List	
01.201707151556	<input type="checkbox"/>
02.201707151556	<input type="checkbox"/>
03.201707151556	<input type="checkbox"/>
04.201707151556	<input type="checkbox"/>
05.201707151556	<input type="checkbox"/>

Press "MENU" key to switch item.

Press "UP" key or "DOWN" key to tick ✓ in the box (means select this file).

Record

Record	
File Name:	201903051458
File Time:	00:00:00 

Press "UP" key or "DOWN" key to switch  .

( pause  record)

ArtNet

ArtNet space —
parameters.

ArtNet	
Universe:	004
No:	Uni/Total:08
	Uni/Chan:02

Press "UP" key or "DOWN" key to adjust parameters.

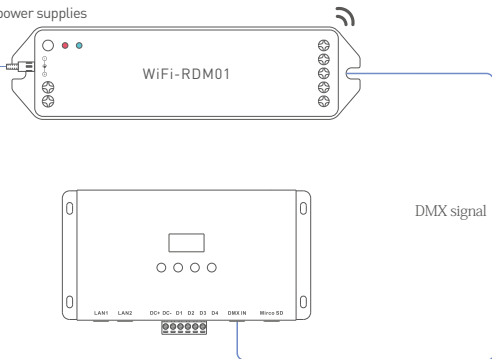
Work with the RDM Programmer

The ArtNet -SPI Control System can work with a DMX address programmer that follows the standard RDM protocol.

It is recommended to use LTECH RDM Programmer (Model: WiFi-RDM01), which allows remote browsing, parameter setting and DMX address setting.

Support portable power supplies

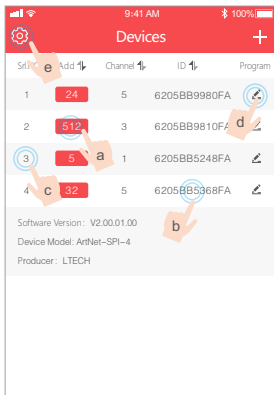
5-24Vdc
Input voltage



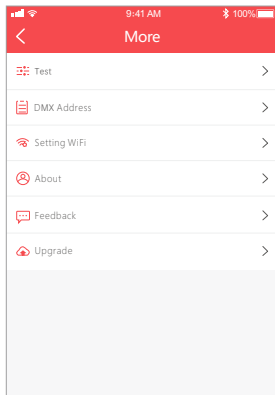
Mobile App Interface for the RDM Programmer

Download the App with your mobile phone and connect the RDM Programmer successfully, then you are allowed to set parameters through the APP. Please refer to the WiFi-RDM01 manual for more details.

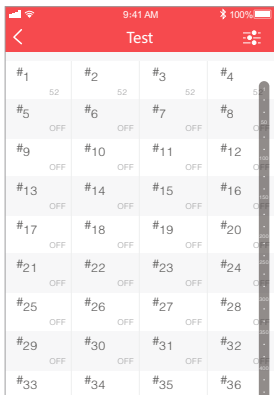
- At the homepage, click "Add" of the device you are going to operate to edit the address, as shown below in the interface.
- Click "ID" to get more details for devices.
- Click "No" to issue a recognizing command.
- Click "✎" to view/modify parameters, including modifying frequency, mode, curve, querying output power and modifying current.
- Click "⚙️" in the upper left corner to access the settings which allows you to test, edit DMX addresses, set WiFi for devices and upgrade firmware.



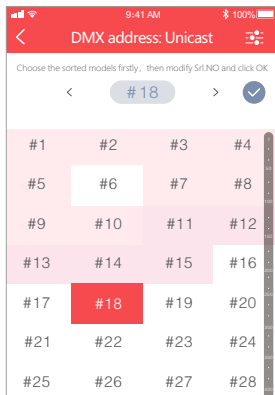
Home page



Setting



Test



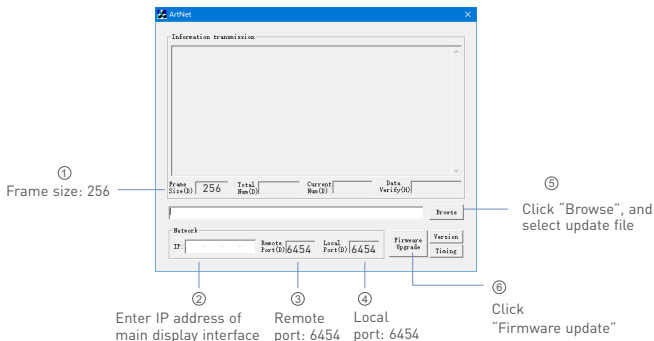
DMX address setting

Firmware Update

Please connect ArtNet control system to computer, and copy update file to computer.

Method 1. Firmware update with software.

Open software  in your computer, enter follow interface and update firmware.

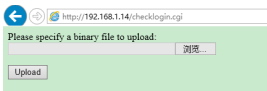


Method 2. Firmware update with explorer.

Open explorer, enter "http://192.168.1.14" in the address bar, "login" interface appeared, enter user name "LTECH", password "123456", then click "login" button.



Enter the following interface, click "browse" button to select the update file, then click "upload" button to update, if "update done!" appeared means update successful.



* For firmware update, please contact us for update software and documents.

LTECH



www.ltech-led.com